

KAMAMI

KAmoLM4950



Rev. 20241026153736

Źródło: <https://wiki.kamamilabs.com/index.php/KAmoLM4950>

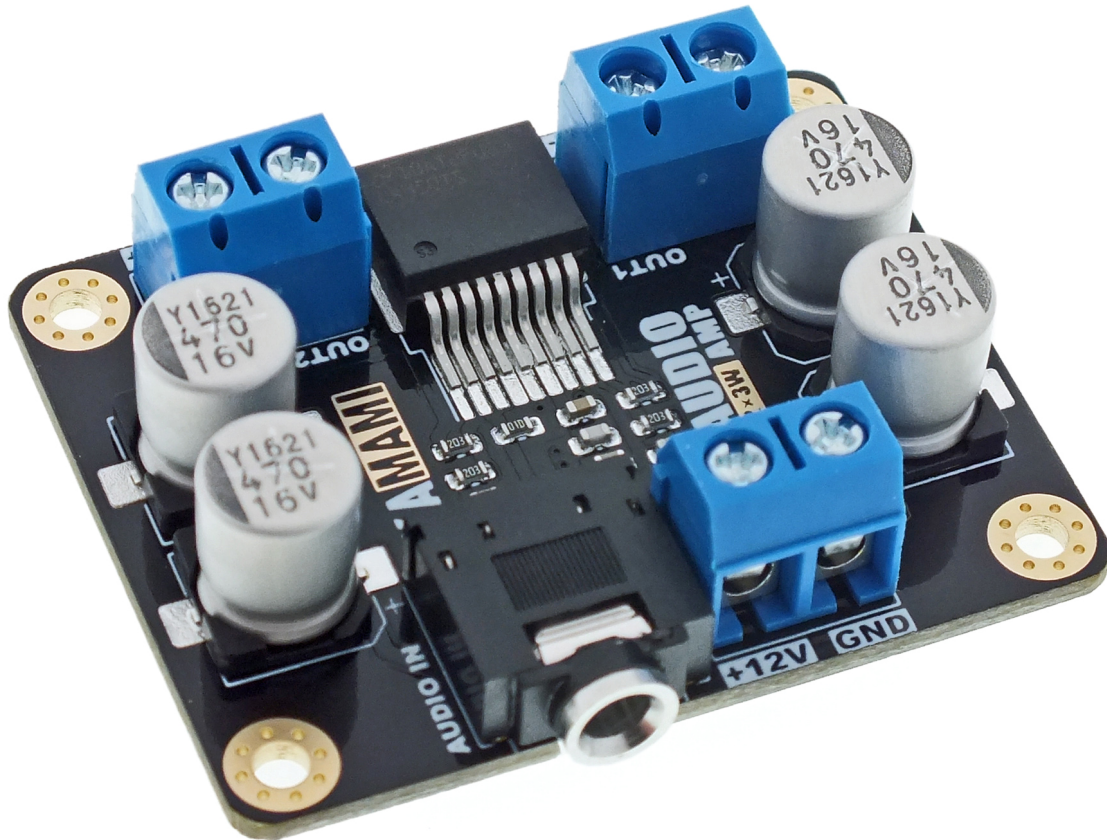
Spis treści

Basic features and parameters	1
Standard equipment	2
Wiring diagram	3
Printed circuit board view	4
Power supply	5
Audio input	6
Speaker Outputs	7
Connection	8

Description

[KAmodLM4950](#) - 2x3 W power amplifier.

Audio power amplifier module based on the LM4950 circuit. It has two 3 W channels. The amplifier is powered by a voltage ranging from 10 to 15 V connected to a screw connector. The audio input is led out on a standard 3.5 mm Jack connector, while the speaker outputs are available on screw connectors. The module provides good sound quality with low power consumption, is compact and easy to use. It is ideal for low-power audio systems such as portable music players, computer speakers, portable radios, etc. It can also be used in service as an alternative to the original, damaged amplifier.



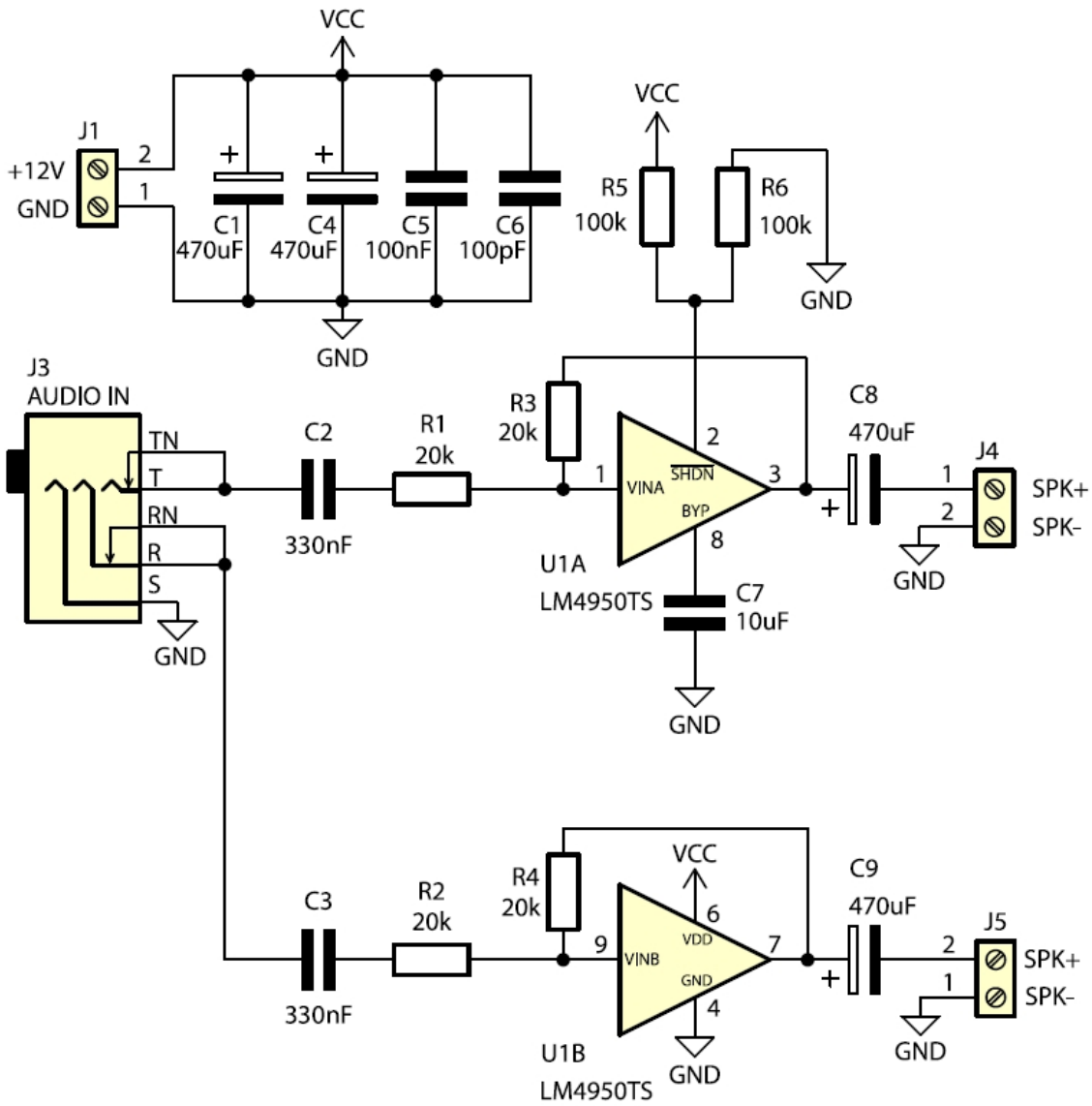
Basic features and parameters

- number of channels: 2
- output power 2 x 3 W (12 V / 4 Ω)
- power supply: 10 - 15 VDC, screw connector
- audio input: 3.5mm Jack socket
- speaker outputs: screw connectors
- speaker impedance: from 4 Ω to 8 Ω
- built-in thermal and short circuit protection
- dimensions: 48 x 38 x 15 mm

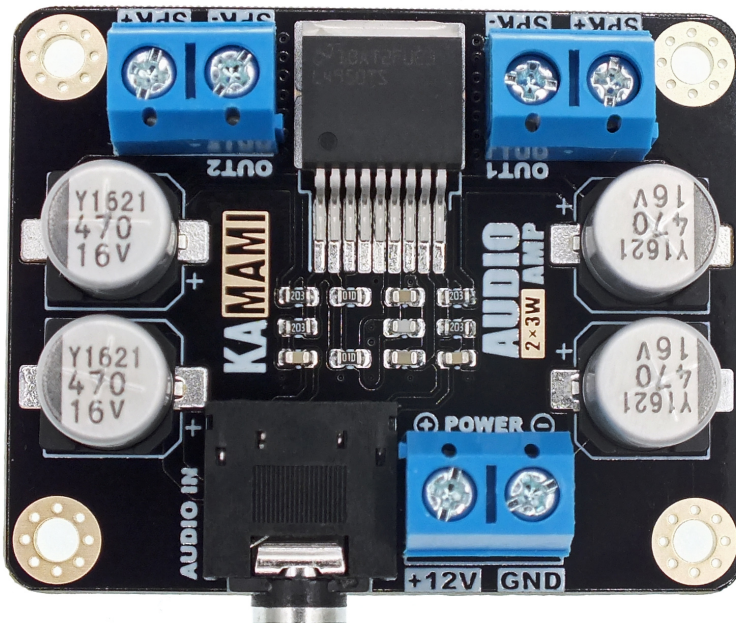
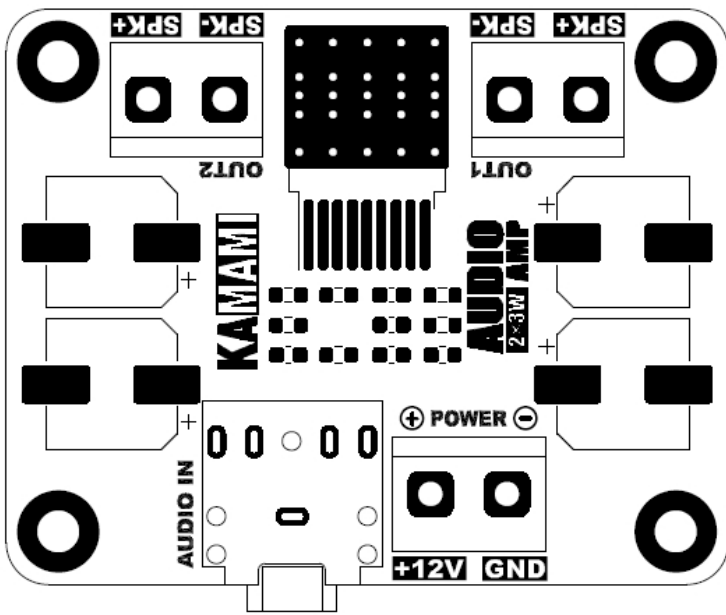
Standard equipment

Code	Description
KAmoLM4950	• Assembled and powered up module

Wiring diagram

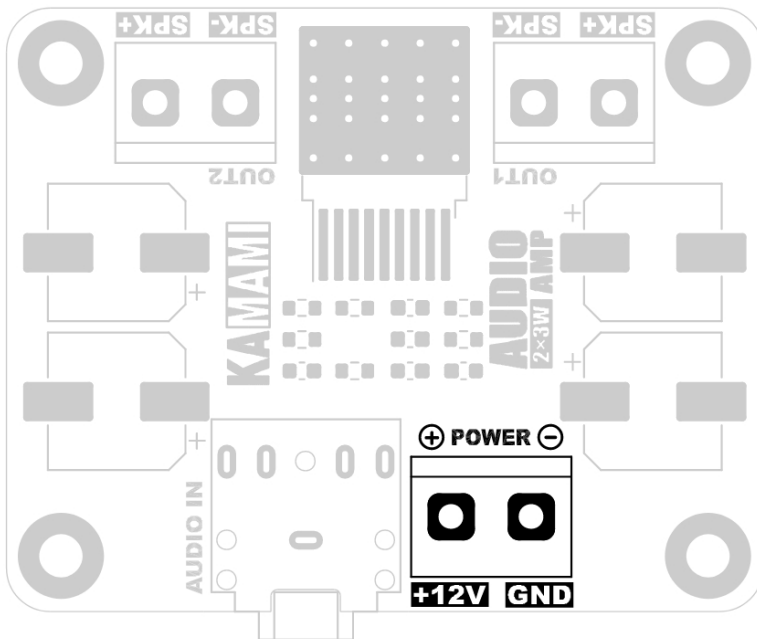


Printed circuit board view



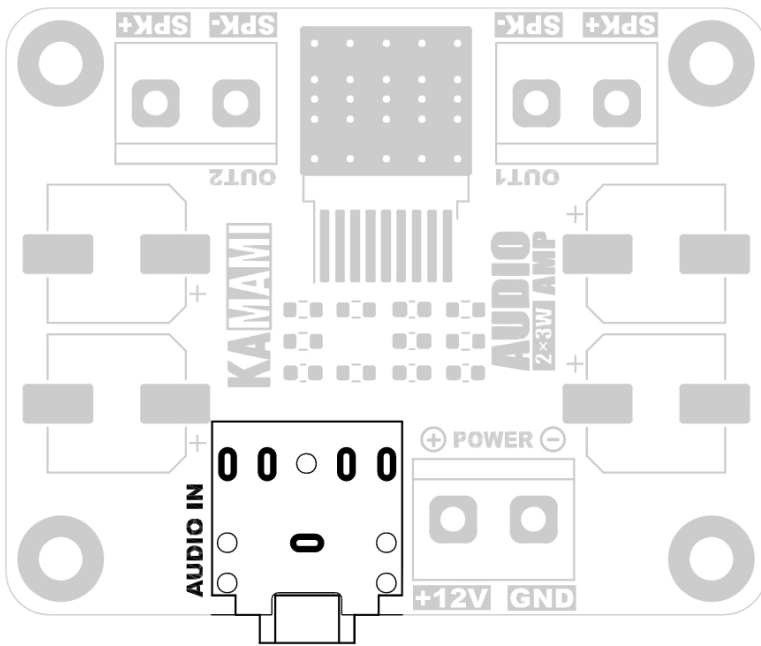
Power supply

The amplifier module is equipped with a **POWER** screw connector for connecting the power supply. The supply voltage should be between 10 and 15 VDC. The typical supply voltage is 12V, this value will allow you to obtain the nominal parameters of the amplifier.



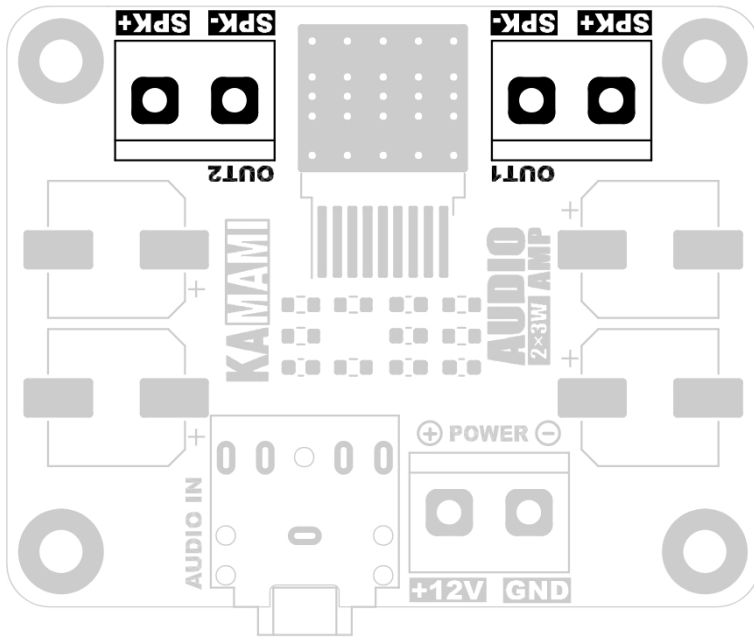
Audio input

The audio signal input is output on a standard 3.5 mm Jack **AUDIO IN** connector.

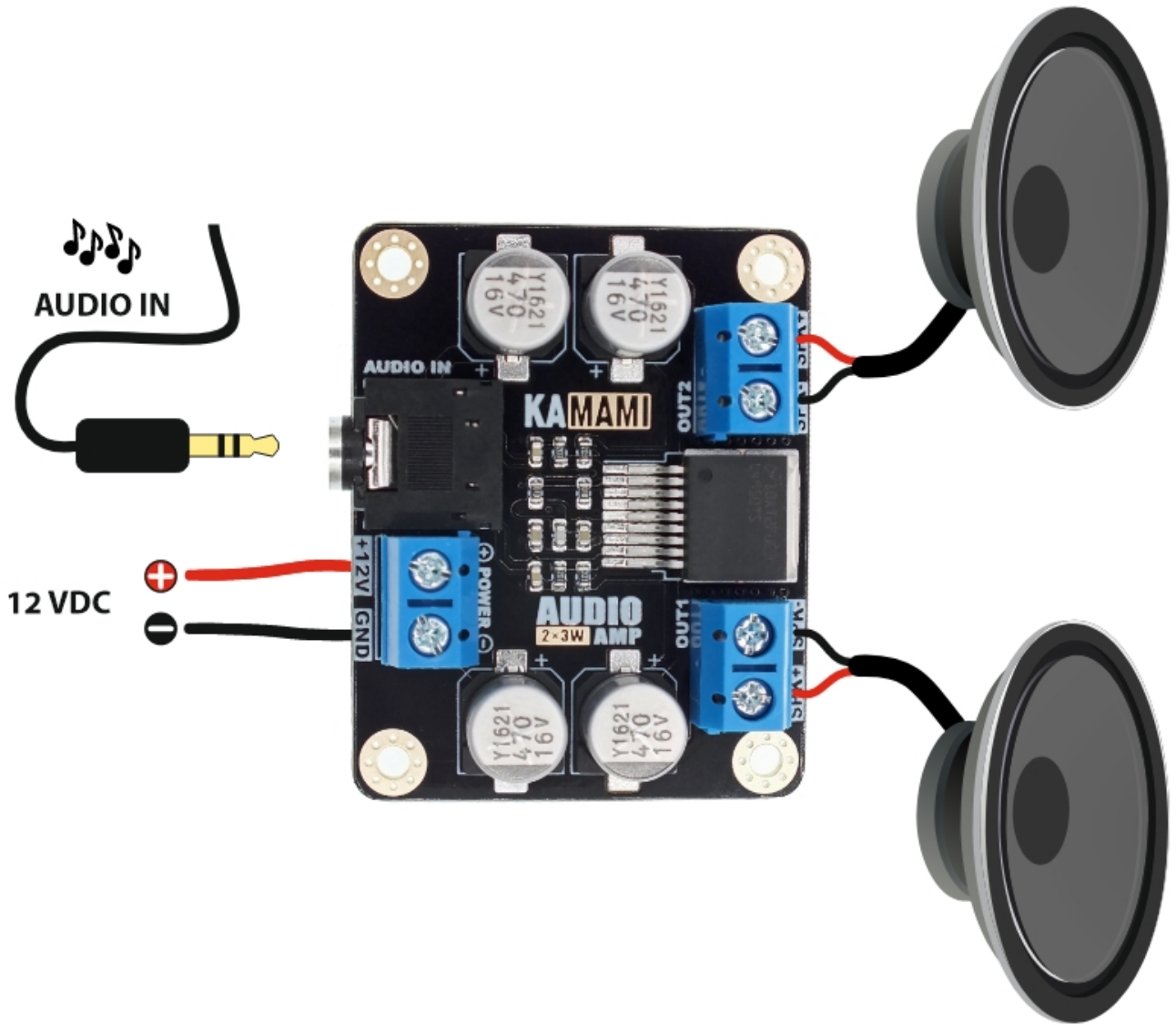


Speaker Outputs

The speaker outputs are available on the **OUT1** and **OUT2** screw terminals



Connection





Zastrzegamy prawo do wprowadzania zmian bez uprzedzenia.

Oferowane przez nas płytki drukowane mogą się różnić od prezentowanej w dokumentacji, przy czym zmianom nie ulegają jej właściwości użytkowe.

BTC Korporacja gwarantuje zgodność produktu ze specyfikacją.

BTC Korporacja nie ponosi odpowiedzialności za jakiegokolwiek szkody powstałe bezpośrednio lub pośrednio w wyniku użycia lub nieprawidłowego działania produktu.

BTC Korporacja zastrzega sobie prawo do modyfikacji niniejszej dokumentacji bez uprzedzenia.